



MONTHLY MEMBERSHIP PROGRESS REPORT

District 2 E1

Results as of: 06/30/2018

GMT: JOE AL PICONE

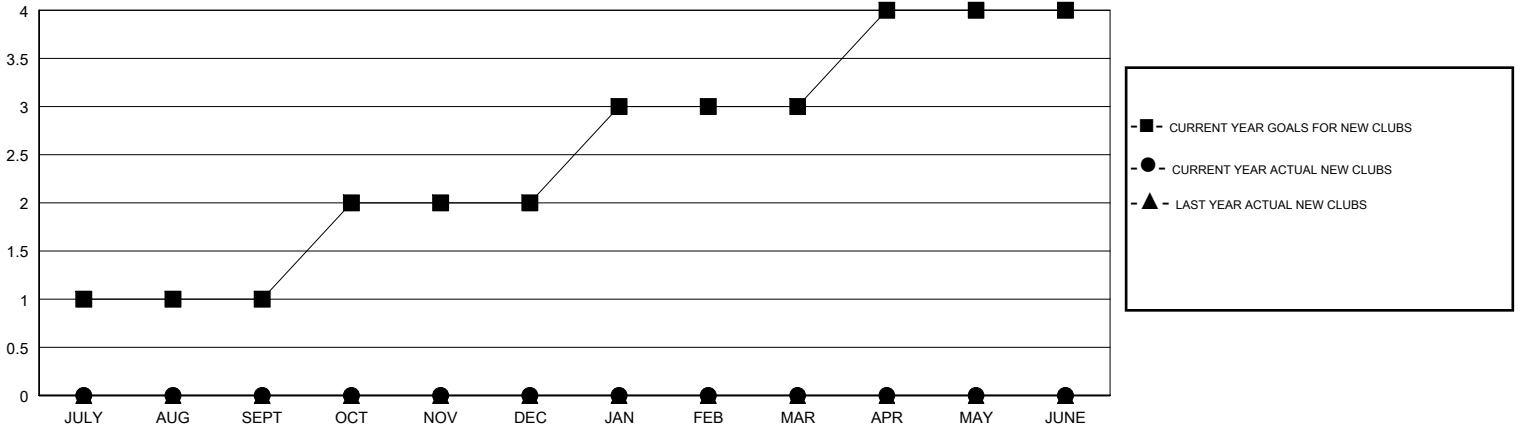
LOCATION TEXAS

GMT CA

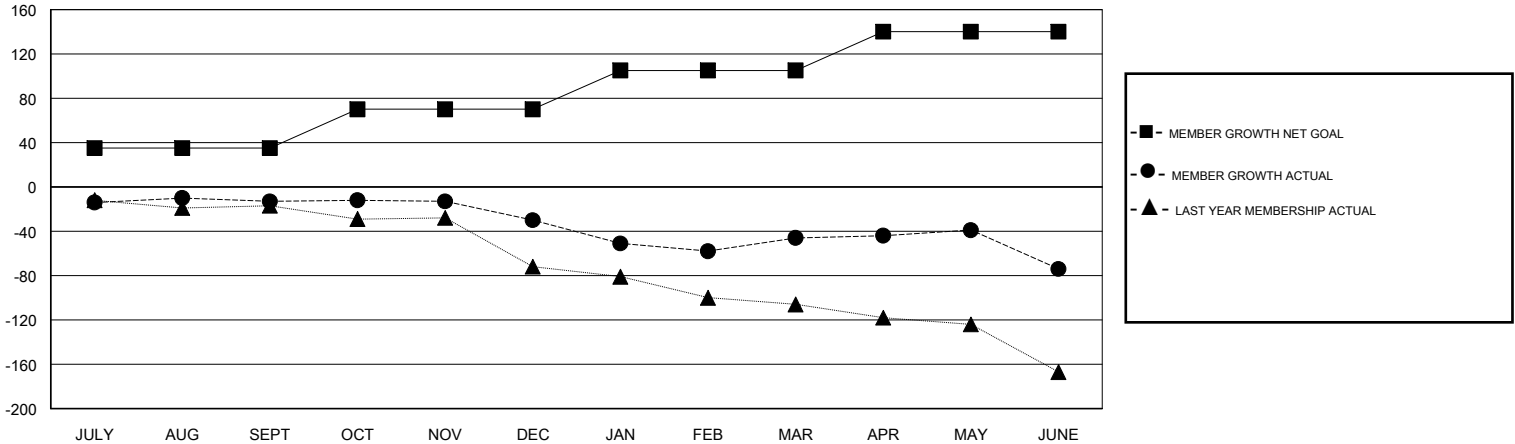
Clubs			
RESULTS FOR 2017-2018			
QUARTER	NEW CLUB GOAL	NEW CLUBS	DROPPED CLUBS
JULY/AUG/SEPT	1	0	0
OCT/NOV/DEC	1	0	2
JAN/FEB/MAR	1	0	1
APR/MAY/JUNE	1	0	2

Members			
RESULTS FOR 2017-2018			
QUARTER	MEMBER GROWTH NET GOAL	MEMBER GROWTH ACTUAL	DROPPED MEMBERS ACTUAL (including transfers)
JULY/AUG/SEPT	35	25	36
OCT/NOV/DEC	35	38	53
JAN/FEB/MAR	35	42	54
APR/MAY/JUNE	35	34	62

GOALS AND ACTUAL NEW CLUBS CUMULATIVE



GOALS AND ACTUAL MEMBERS CUMULATIVE



DROPPED CLUBS: 5

30 CLUBS OF 51 ADDED 1 OR MORE NEW MEMBERS

GENDER DISTRIBUTION
 MALE 771 (72.80%)
 FEMALE 288 (27.20%)
 Women Percentage Fiscal Year Goal: 35%

DROPPED MEMBERS	
DECEASED	10
CLUB CANCELLED	37
OTHER	158
TOTAL	205

[CLICK HERE FOR CUMULATIVE MEMBERSHIP DATA](#)

TOTAL FAMILY UNIT MEMBERS	0
FAMILY MEMBERS PAYING HALF DUES	0